



# AHMB-031

## Multi-Purpose Mounting Base

### Design Characteristics

The detector base is designed for use on all AH-031 series fire detection devices. It has a built-in shorting spring for use when the detector head is removed, which will prevent an open circuit fault condition at control panel during maintenance.

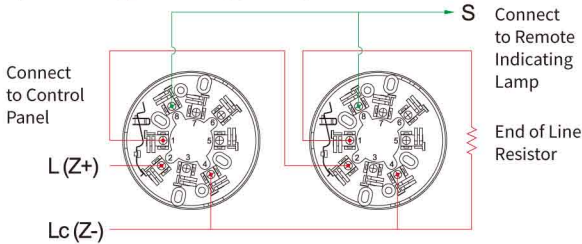
- Applies to model nos. AH-0311, AH-0315, and AH-0316.



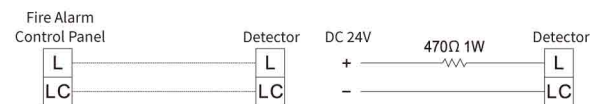
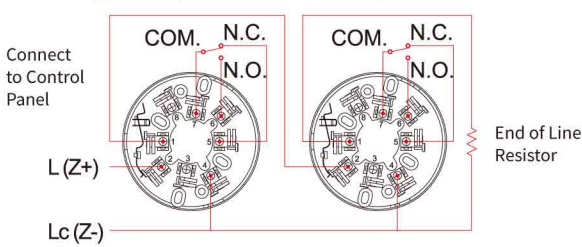
**GB-031-S**  
Height: 27mm

**GB-031-T**  
Height: 34mm

#### 2, 3-Wire Type 3-Wire Type (see green line)



#### 4-Wire Type (Relay Output) Contact Ratings 0.8A @30V DC 0.4A @125V AC



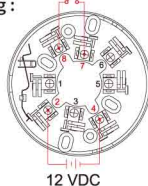
#### Resettable

**Alarm Output :**  
Normal Status  
5 & 7 short circuit  
6 & 7 open circuit  
Alarm Status  
6 & 7 short circuit  
5 & 7 open circuit



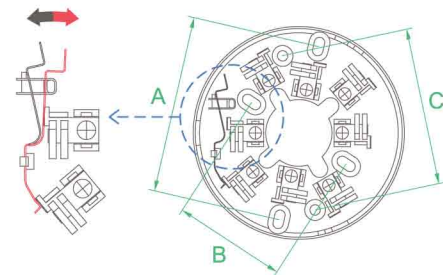
**Disconnection or Power-off Warning :**

Normal Status  
7 & 8 short circuit  
Fault Status  
7 & 8 open circuit



Contact Ratings  
0.8A @ 30V DC  
0.4A @ 125V AC

#### Diagram



Black : Normal  
Red : Close Circuit

A : 81~89mm  
B : 50~59mm  
C : 75.5mm

EN54

